

Sanitary Positive Displacement Pumps

dixonvalve.com • Customer Service: 800.789.1718



Dixon® / JEC Positive Displacement Pumps

The **Cleanest of Clean**; pumps are 100% CIPable. Small compact lightweight design equals less pump more performance. Gently handle low to high viscosity fluids.

Applications

Food Processing:

- Sauces, salad dressing, soups, oils, meats, dough, chocolate, candy, etc.

Dairy:

- Milk, cheese, ice cream, yogurt, butter, etc.

Beverage:

- Juice, water, liquor, specialty drinks, etc.

Pharmaceutical:

- Aseptic, metering, R & D, sterile environments, etc.

Personal Care:

- Moisturizer, cosmetics, toothpaste, shampoo, etc.

Industrial:

- Paint, resin, ink, chemicals, detergents, etc.
-



Dixon Sanitary

Service

Solutions

Selection

In-House Application Engineering Services

- Pump sizing and selection
- Troubleshooting support
- CAD drawings and 3D models

In-House Base Mount and Cart Packages

- Custom engineered packages
- Made and assembled in the USA
- Many options available



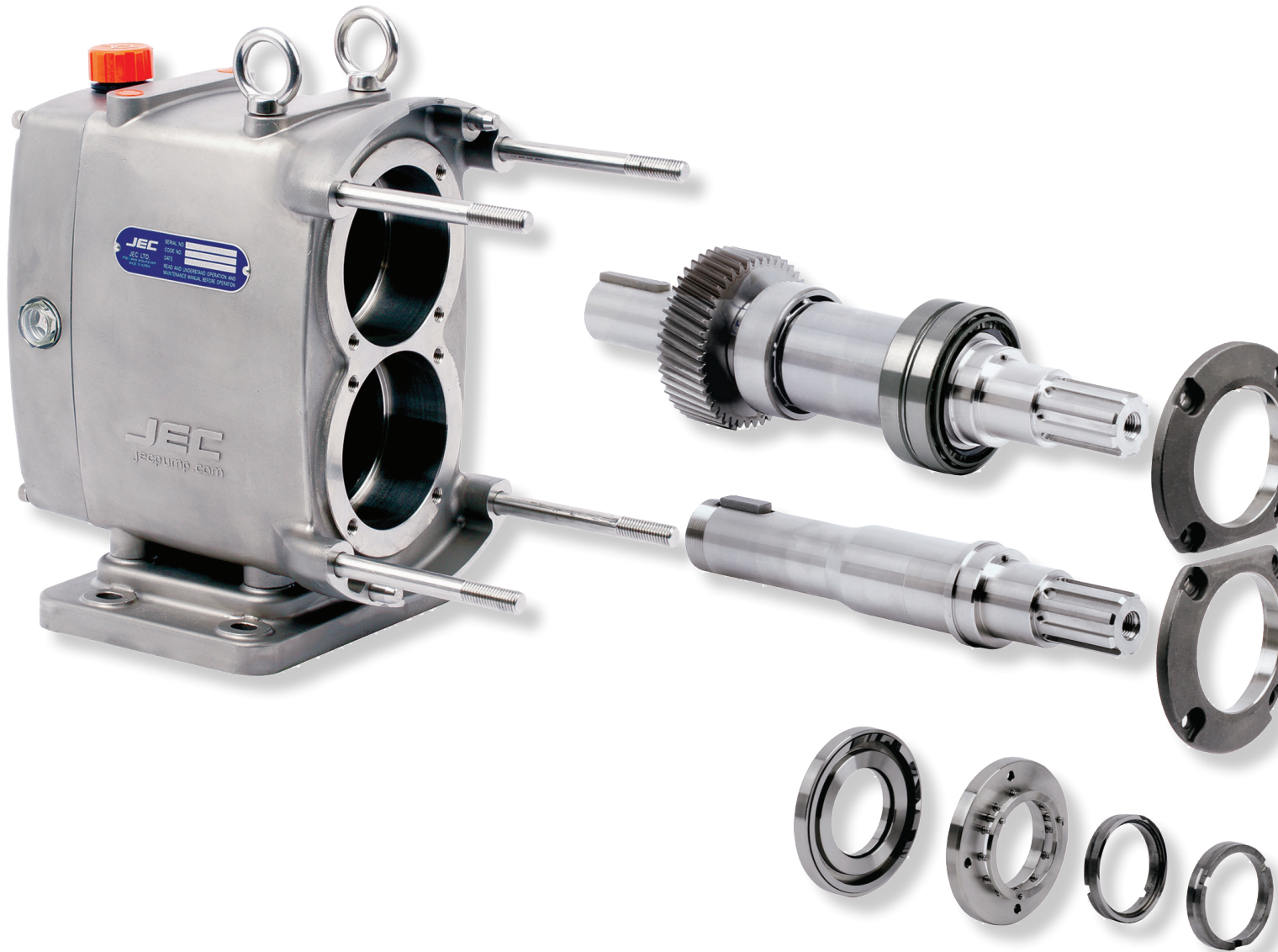
Stock

- Large inventory of pumps and parts
- All stock items can ship within 24 hours
- Most assemblies ship within 2 weeks

*Take advantage of all these services by calling
Dixon Sanitary's Engineering Department or email sanitarysales@dixonvalve.com*

JRZL - Series Ro

Pumps can be fitted with a variety of features and options to ensure



Universal Mounting

Pumps can be mounted with top/bottom shaft drive, vertical/horizontal inlet/outlet.

Stainless Steel Gear Box

Standard stainless steel gear box with single oil reservoir made from precision casting offers paint free and rust free long lasting durability.

Helical Timing Gears

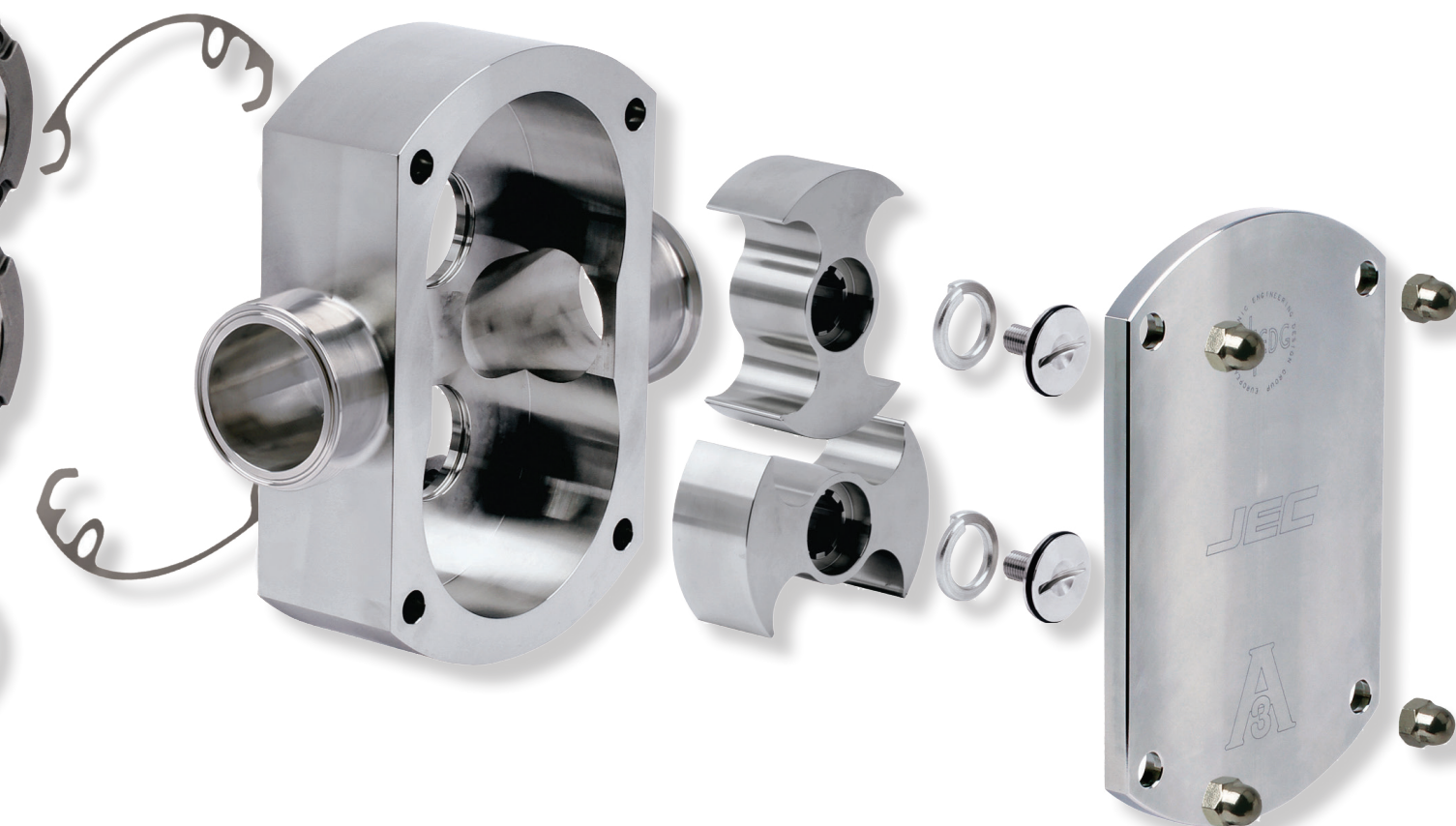
Using helical timing gears, the rotors are driven at less vibration to extend pump efficiency and seal lifetime, even under high speed and high discharge pressure.

Front Loading Seal

Front loading seals provide faster maintenance, easier cleaning and less down time. All seal options are designed for quick and simple retrofit.

tary Lobe Pumps

the best performance will be achieved for your specific application.



Ease of Shimming

Stainless steel shims being located between gearbox and casing makes it easy to adjust rotor clearance without having to completely disassemble the gear box.

Bi-Wing Rotors

A low-slip Bi-wing rotor maintains efficiency even on low viscosity products by means of longer seal path. Many other rotor options available.

316L Stainless Steel

All product contact areas are standard 316L stainless steel and 25R_a surface finish meets EHEDG and 3A requirements.

100% CIPable

Optimal CIPability is achieved by minimizing the dead-end space between sealed areas.

JRZL - Series Rotary Lobe Pumps

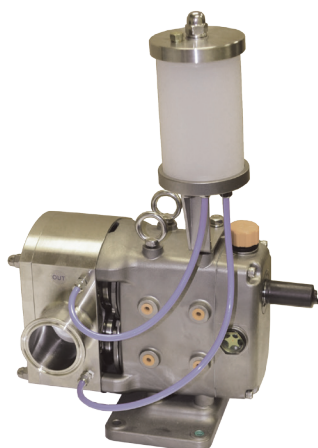


Features:

- All wetted parts are 316L stainless steel
- Front loading seal options:
 - Single(standard)and double mechanical seals, TC vs TC (standard)
 - Single and double O-ring seals
 - Triple lip seal
 - Flush option available on all seal types
- Elastomers:
 - EPDM (standard), Buna and FKM
- Rotors:
 - Bi-Wing (standard)
 - Single Wing
 - Bi-Lobe
 - Tri-Lobe
 - Multi-Lobe
 - Heli-Lobe
 - Hot clearance for temperatures above **248°F**
 - Viscosity range: 0 - 1,000,000 cP
- Connections:
 - Clamp (standard), others available upon request

Model	Gal / Rev	PSI	Port Size
JRZL105	0.005	300	1"
JRZL110	0.01	300	1"
JRZL115	0.03	175	1½"
JRZL120	0.06	115	2"
JRZL220	0.11	175	2"
JRZL225	0.16	115	2½"
JRZL330	0.27	175	3"
JRZL340	0.38	115	4"
JRZL440	0.60	175	4"
JRZL450	0.88	115	5"

Self Contained Flushing System



Features:

- No additional piping needed
- Easy maintenance
- Available for all JRZL-Series pumps with either glass or acrylic chambers

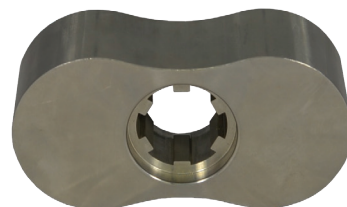
JRZL - Series Rotary Lobes



Bi-wing



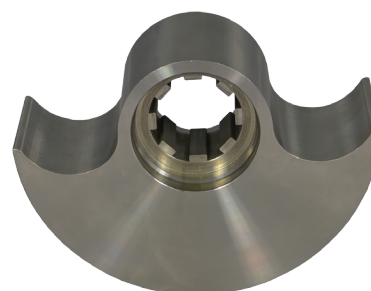
Heli-lobe



Bi-lobe



Tri-lobe



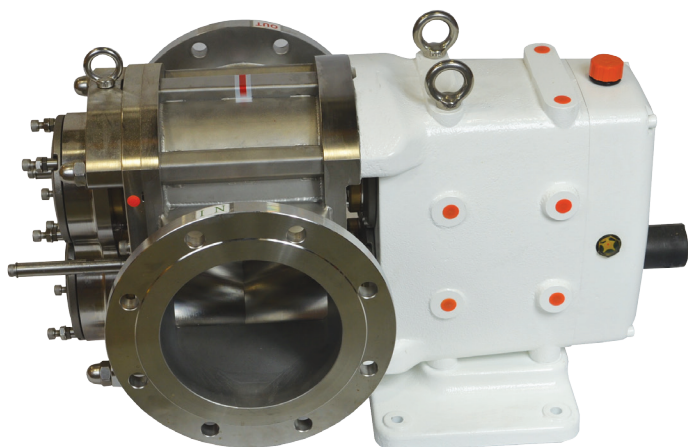
Single-wing

Maximum Speed (RPM)

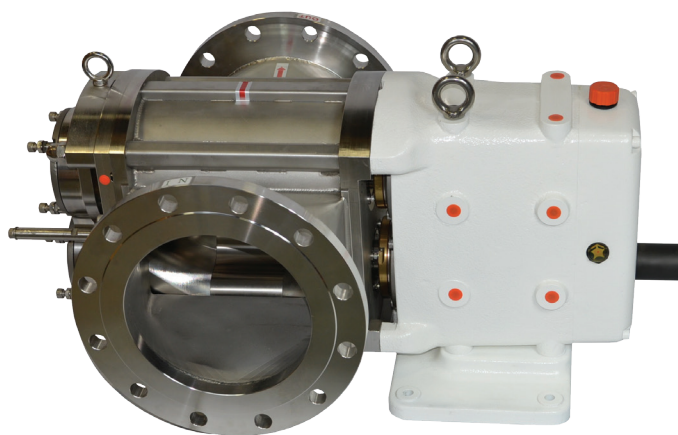
Model	Bi-wing	Heli-lobe ¹	Bi-lobe	Tri-lobe	Single-wing	Multi-lobe
JRZL 105	1000	1600	800	800	100	1000
JRZL 110	1000	1600	800	800	100	1000
JRZL 115	1000	1600	800	800	100	1000
JRZL 120	800	1600	800	800	100	800
JRZL 220	700	1400	700	700	100	400
JRZL 225	700	1400	700	700	100	400
JRZL 330	600	1200	600	600	100	NA
JRZL 340	600	1200	600	600	100	NA
JRZL 440	500	1000	500	500	100	NA
JRZL 450	500	1000	500	500	100	NA

¹ Pulsation free heli-lobe rotors give the pump increased capacity through higher speed limits

JRZF 500 - Series Rotary Lobe Pumps



JRZF580



JRZF5100

Features:

- All wetted parts are 316L stainless steel
- Front loading seal options:
 - Single (standard) and double mechanical seals, TC vs TC (standard)
- Elastomers:
 - EPDM (standard) and FKM
- Rotors:
 - Heli-Lobe
- Connections:
 - Flanged

Model	Gal / Rev	PSI	Port Size	Max Speed RPM
JRZF580	1.85	435	8"	500
JRZF5100	2.64	435	10"	500
JRZF5120	3.17	435	12"	500

JRZL - Series Rotary Lobe Pump Options



Thermal Jacket Pumps

Designed for products that require temperature control such as sugars, chocolate, corn syrup and brewer's yeast with easy attachment to pump front cover and/or casing.



Rectangular Inlet

Enlarged rectangular inlet allows highly viscous products such as semi-solid pastes or mixtures containing semi-solid pieces to be pumped.



Pressure Relief Valve

The pressure relief valve protects the system from pressure peaks or restrictions in the discharge, providing a pressure relief valve loop from discharge to the suction areas up to **145 PSI**.



Ultra Clean Pumps

Fully self-draining pump head and external rotor fixing can eliminate any contaminations and internal crevices. Excellent for sterile pharmaceuticals, ultra-hygienic food processing and aseptic manufacturing. Available in all sizes.



High Pressure Pumps

High pressure pumps have a front bearing cover to support shafts on front and back position. The well-balanced shaft design can handle pressures up to **435 PSI** without shaft deflection.



Acculab

Specially designed for superior metering accuracy with multi-lobe rotors or spur gear rotors which allow minimum pulsation, precise volumetric dosing and packaging, lab and pilot plants or manufacturing applications as well as general fluid transfer.

JRZW 120 Series Rotary Lobe Pump - The Wine Pump



Applications:

- Must and lees
- Transfer
- Bottling

Features:

- Flow & Pressure
 - Maximum flow: 66 GPM
 - Maximum working pressure: 87 PSI

Materials:

- 316L
- EPDM rubber heli-lobe rotors
- White epoxy painted cast iron gear box
- Elastomers
 - EPDM (standard) & FKM

Size:

- 2" clamp

Seal Options:

- Single mechanical seal (standard) TC vs TC
- Double mechanical seal
- Triple lip-seal with ceramic coated sleeve

Optional Pump Cart



- For portable applications the pump can be mounted on a cart with flat free wheels or casters
 - A Nord adjustable speed gearmotor is standard
 - Complete range of VFD options available
-

Limited Warranty

DIXON VALVE AND COUPLING COMPANY (herein called "Dixon") warrants the products described herein, and manufactured by Dixon to be free from defects in material and workmanship for a period of one (1) year from date of shipment by Dixon under normal use and service. It's sole obligation under this warranty being limited to repairing or replacing, as hereinafter provided, at its option any product found to Dixon's satisfaction to be defective upon examination by it, provided that such product shall be returned for inspection to Dixon's factory within three (3) months after discovery of the defect. The repair or replacement of defective products will be made without charge for parts or labor. This warranty shall not apply to: (a) parts or products not manufactured by Dixon, the warranty of such items being limited to the actual warranty extended to Dixon by its supplier; (b) any product that has been subject to abuse, negligence, accident, or misapplication; (c) any product altered or repaired by others than Dixon; and (d) to normal maintenance services and the replacement of service items (such as washers, gaskets and lubricants) made in connection with such services. To the extent permitted by law, this limited warranty shall extend only to the buyer and any other person reasonably expected to use or consume the goods who is injured in person by any breach of the warranty. No action may be brought against Dixon for an alleged breach of warranty unless such action is instituted within one (1) year from the date the cause of action accrues. This limited warranty shall be construed and enforced to the fullest extent allowable by applicable law.

Other than the obligation of Dixon set forth herein, Dixon disclaims all warranties, express or implied, including but not limited to any implied warranties of merchantability or fitness for a particular purpose, and any other obligation or liability. The foregoing constitutes Dixon's sole obligation with respect to damages, whether direct, incidental or consequential, resulting from the use or performance of the product.

Some products and sizes may be discontinued when stock is depleted, or may require a minimum quantity for ordering.

NOTE: Reasonable care has been taken in preparing this catalog. Dixon Sanitary, a division of Dixon Valve & Coupling Company, reserves the right to make corrections and any dimensional changes.

Dixon®, founded in 1916, is a premier manufacturer and supplier of hose couplings, valves, dry-disconnects, swivels, and other fluid transfer and control products. The company's global reach includes a wide range of products for numerous industries including petroleum exploration, refining, transportation, chemical processing, food & beverage, steel, fire protection, construction, mining and manufacturing. Dixon®'s strategic objective is to create solutions that make products safer, leak-free, longer lasting, and always available.

dixonvalve.com • Customer Service: 800.789.1718



The Right Connection®

Dixon Sanitary

Orders from abroad are with longer delivery times

